

Scan 100

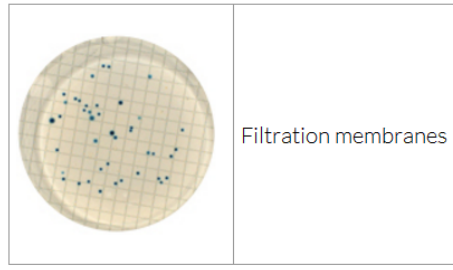
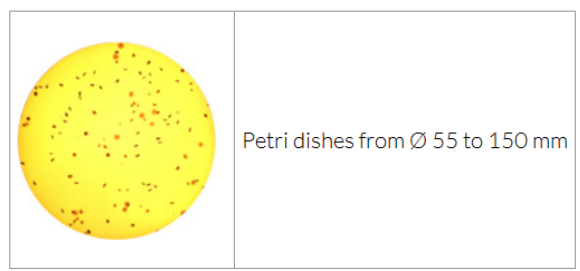


Manual colony counter

- Accurate view and work comfort
 Scan 100 is a high-tech manual colony counter remarkable for its user-friendly functions and wonderful ergonomoy. A LED lighting system with Dark-Field technology give an accurate and contrasted view of the colonies. The integrated USB port allows export of the results to the software of your choice (PC/Mac) to guarantee traceability.

Features

- COUNTING
 - All Petri dishes
 - PetriFilm, Sanita-kun, Compact Dry
 - Counting: from 0 to 1999 CFU
- Examples :





Scan 100

2. DARK FIELD TECHNOLOGY

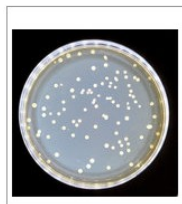
- Long lasting white LED lighting system
- Accurate and contrasted view of the colonies
- Easy adjustable lighting sensitivity
- No eye fatigue

Comparison of a standard lighting and the Scan 100 lighting:



Standard neon lighting: agar and the colonies become yellowish and as a result: contrast is imperfect, colonies are difficult to count.

vs.



Dark Field technology: colonies are perfectly lit on a dark background. As a result: the lighting is accurate and the contrast is optimal, colonies are easy to count.

3. ERGONOMIC

- Ergonomic hand rest
- Comfort in long-use sessions
- Adjustable touch surface

4. USB DATA EXPORT

- Integrated USB port
- Easy transfer of data to any software without prior installation

ADVANTAGES

- All stainless steel, very robust
- Long lasting white LEDs, adjustable intensity
- Dark Field lighting
- Ergonomic hand rest
- Instant export of results via USB

TECHNICAL SPECIFICATIONS

- Stainless steel
- Adjustable sensitivity of touch surface
- For all Petri dishes: diameter 55, 65, 90, 150 mm, PetriFilm, Compact Dry and Sanita-kun
- Multifunction digital screen
- Counting: from 0 to 1999 CFU
- USB port: easy data transfer via any software (PC/Mac)
- Dark Field technology for a contrasted view of the colonies
- Adjustable counting beeps: 4 sound levels
- Adjustable LED intensity
- Adapted to any pen
- Built-in storage rack

- Power: 100-240V~ 50-60Hz

Machine: size (W x D x H): 25 x 30 x 18 cm, weight: 4.5 kg

Box: size (W x D x H): 49 x 39 x 39 cm, weight: 8 kg

- 1 year guarantee (after registration)

- Life-time service

- In compliance with: ISO 7218

- Designed and made in France

Manufactured under: ISO 9001 V2008, CE, WEEE 2002/96/EC,

RoHS 2002/95/EC standards

Scan 100



Scan 100	
Reference	435 000
Petri dishes size	55, 65, 90, 150 mm - All media
Dimensions (w x d x h)	31 x 25 x 18 cm
Weight	4.5 kg
Made from	Stainless steel - neoprene cell
Power	100-240 V 50/60 Hz
Screen	Digital, multi-function
Counting	0-1999 CFU
Export	Via USB for transfer to any software without prior installation
Indicative sound	Adjustable volume: 4 levels
LED lighting	Adjustable lighting
Counting zone	Touch surface: adjustable sensitivity
Storage	Built-in storage rack for accessories

Delivered with: white background plate, 90 mm dish adapter, power cord, USB cable, black counting pen. Attention: the magnifying glass is optional and needs to be ordered separately (ref. 435 001)